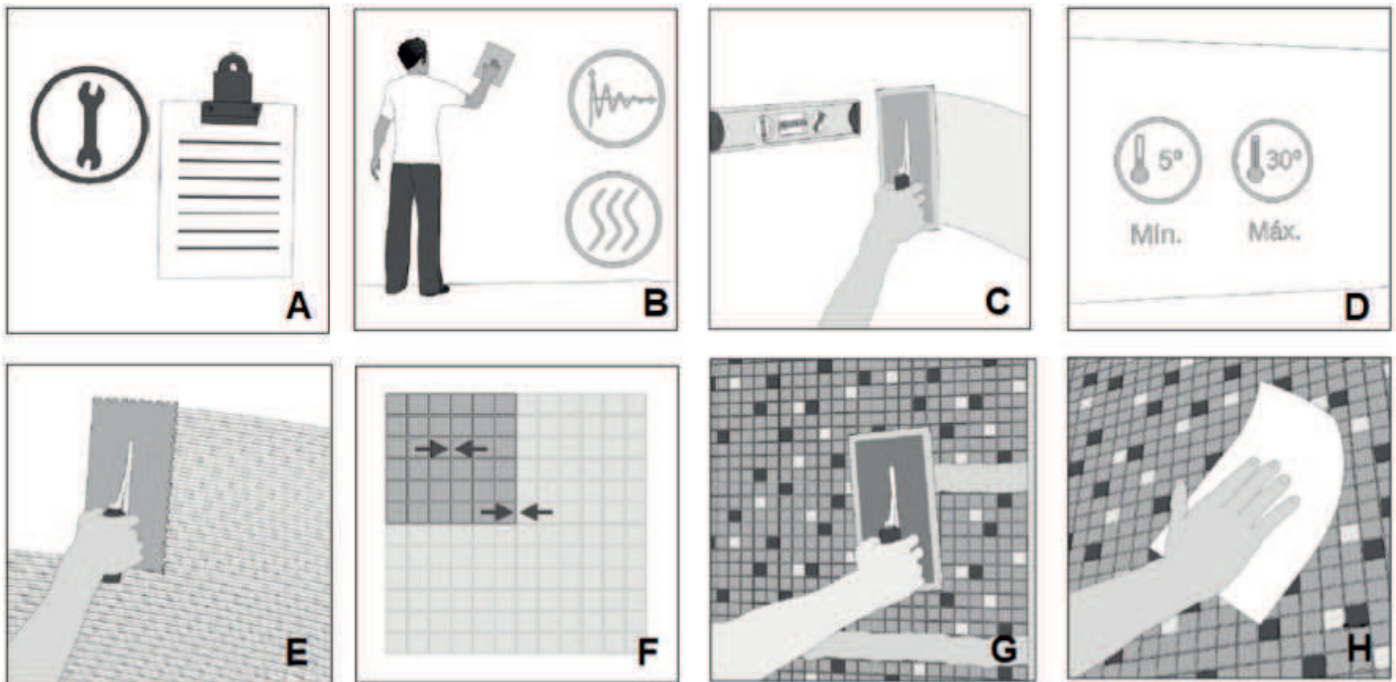


INSTALLATION INSTRUCTIONS

Stone Mosaics



**1. IMPORTANT INFORMATION PLEASE READ BEFORE STARTING TO INSTAL**

IT IS VERY IMPORTANT to read and thoroughly understand the information contained in these guidelines before commencing installation, since improper installation, use or maintenance may invalidate the manufacturer's warranty. The following are the responsibility of the installer: Carefully inspect ALL materials before installation to check there are no defects. The warranty does not cover materials installed with visible defects.

-If you are not satisfied with the materials before installation, please contact your retailer. DO NOT INSTALL.  
 -We recommend a final inspection is made to examine the colour, finish, style and quality BEFORE installation.  
 -Check all materials are correct. We cannot be held responsible for any expenses incurred once pieces with visible defects have been installed.  
 -It is the responsibility of the installer and owner to ensure that on site working conditions and working area are acceptable before installing any materials.  
 The best way to achieve a pleasing finish is to create a panel on the floor, combining various mosaic shades prior to positioning these on the wall. Installation assumes acceptance of the consignment.

**2. SURFACE PREPARATION (B)**

The subfloor or substrate should be solid/compact throughout its entire thickness and surface, with no loose parts which might be easily removed. It should be completely dry and free of dust, grease or any other substance. Do not install on subfloors at risk of rising damp since this could compromise the installation. In addition, check that it is suitably plumb and level with no deviation in flatness greater than 2mm, measured using a 2m straightedge. In the case of any deviations greater than 2mm, we recommend using specific products (C). (For correct installation of levelling products, the ambient temperature should be between 5°C and 30°C (D)). Contraction joints in screeds may be filled with flexible materials. Construction joints must be clear.

**3. SPECIFICATION FOR INSTALLING MOSAICS**

**3.1. General**

Materials used in the installation include mosaic tiles and fixing materials (adhesives and grouts), fillers etc. All of these should be in accordance with the technical specification required for the design, and the manufacturer's guidelines should be followed. A perimeter joint of between 4-6mm is required.

Where mosaics need to be cut during installation, suitable stone cutters with water-cooled discs should be used. Our interactive catalogue ([www.anticcolonial.com](http://www.anticcolonial.com)) con-

tains details ☺ of our mosaic models. The direction of the arrows on the back of each piece show the direction for correct installation.

Please take into account that this is a natural product and there may be shade variations between different batches. Small variations are characteristic of handmade mosaics. We recommend checking the pieces prior to installation. Check the website [www.anticcolonial.com](http://www.anticcolonial.com) for the recommendations for use of each model.

**3.2. Laying Tiles (E)**

To ensure mosaics are installed correctly, please refer to the technical data sheets on the L'Antic Colonial website [www.anticcolonial.com](http://www.anticcolonial.com) which provide details of recommended adhesives for each model. Please take into account whether the tiles are to be laid in dry or damp areas. (We do not recommend installation in swimming pools.) Depending on the mosaic models, L'Antic Colonial recommends one of the following Butech adhesives.

-ONE-FLEX PREMIUM. ONE-FLEX PREMIUM is the latest generation C2 TE S1 type, single-component cement-based adhesive, in accordance with EN 12004, suitable for laying all types of ceramic tiles, mosaics and natural stone on the most common substrates used in construction. Further information and application guidelines may be found on the Butech website <http://www.butech.net>

-SUPER-ONE N is a C2 FTE S1 type, high-performance cement-based adhesive in accordance with EN 12004, which can be walked on after 4 hours. Further information and application guidelines may be found on the Butech website <http://www.butech.net>

Ensure that the distance between each tile sheet is the same as between the mosaics, to create a uniform appearance with all joints the same distance apart (F). The adhesive must be left to dry for 24 hours before grouting.

**3.3. Grouting (Applicable only to mosaic tiles with joints) (G)**

To grout the mosaics correctly, all pieces must be perfectly clean and dust-free. Please refer to the technical data sheets on the L'Antic Colonial website [www.anticcolonial.com](http://www.anticcolonial.com) for details on recommended adhesives for each model. Please take into account whether the tiles are to be laid in dry or damp areas. (We do not recommend installation in swimming pools.) Depending on the mosaic models, L'Antic Colonial recommends one of the following Butech grouts.

-COLORSTUK 0-4. COLORSTUK 0-4 is a CG 2 type fine grout, in accordance with EN 13888, for grouting joints up to 4mm. Further information and application guidelines can be found on the Butech website <http://www.butech.net>

-COLORSTUK RAPID N. is a CG 2 type high-performance

cement-based grout, in accordance with EN 13888, for grouting joints up to 15 mm. Further information and application guidelines can be found on the Butech website <http://www.butech.net>

-COLORSTUK 0-4 is a CG 2 type fine grout, in accordance with EN 13888, for grouting joints up to 4mm. Further information and application guidelines may be found on the Butech website <http://www.butech.net>

If mosaics are to be installed in damp areas or showers, L'Antic Colonial recommends protecting the installation with FILAFOB so the joint is waterproof.

**3.4. Cleaning after installation (H)**

Use a sponge or cloth to remove any residues before the adhesive sets. It is essential not to leave the grout to dry excessively as this could make it more difficult to clean the mosaics. This operation must be repeated two or three times until the mosaics are completely clean, and the surface thoroughly rinsed using a sponge or cloth. Using detergents or abrasives as cleaning agents may cause irreversible damage. For any queries, please consult the manufacturer.

**4. MAINTENANCE AND CLEANING**

Although stone is easily maintained, this care is necessary. As a general rule, the best product for cleaning natural stone is water. To avoid accumulation of lime scale, minerals or other residues, or chemical substances which may affect the surface of the stone, rinse the stone with clean water and dry with a soft cloth. PH neutral detergents may be used, although specialist cleaners offer the best compromise between cleaning and care of the stone. To maintain natural stone, L'Antic Colonial recommends FILACLEANER, which is a concentrated neutral cleaner. It cleans without attacking the stone, and is ideal for general maintenance.

Strong chemicals such as bleach, acid-based degreasers, ammonia, lime scale removers, etc., should be avoided. It is essential that all spillages of any product even those mentioned above be cleaned up as soon as possible using a cloth or absorbent paper. This will help subsequent stain removal. Abrasive sponges or scouring pads should not be used, since they may damage the surface of the mosaics.

Extensively used surfaces must be sealed annually for optimum protection, if maintenance recommendations have been followed. If it becomes necessary to reapply mosaic stone protection, L'Antic Colonial recommends: FILA STONE PLUS for materials that require the colour revitalised, FILA FOB for materials with a classic finish where you do not wish to alter the colour of the stone and FILA MP90 for materials with a polished finish where you do not wish to alter the colour of the stone. Please refer to the manufacturer's guidelines for using cleaning products and contact us should you have any queries. We recommend to periodically check the state of the mosaic grout according to the use.